

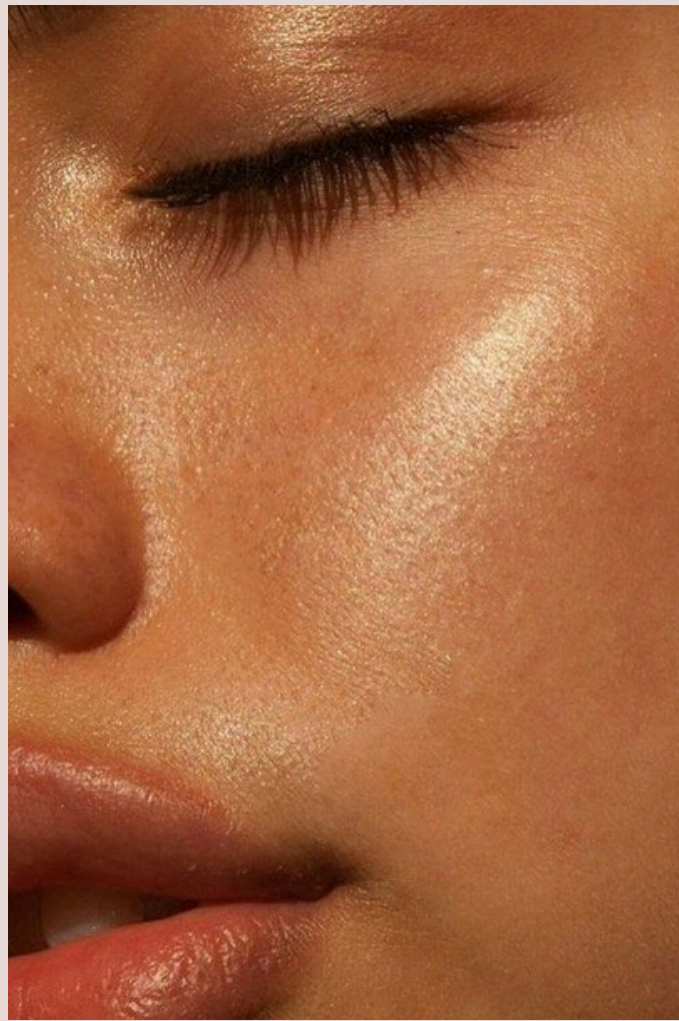
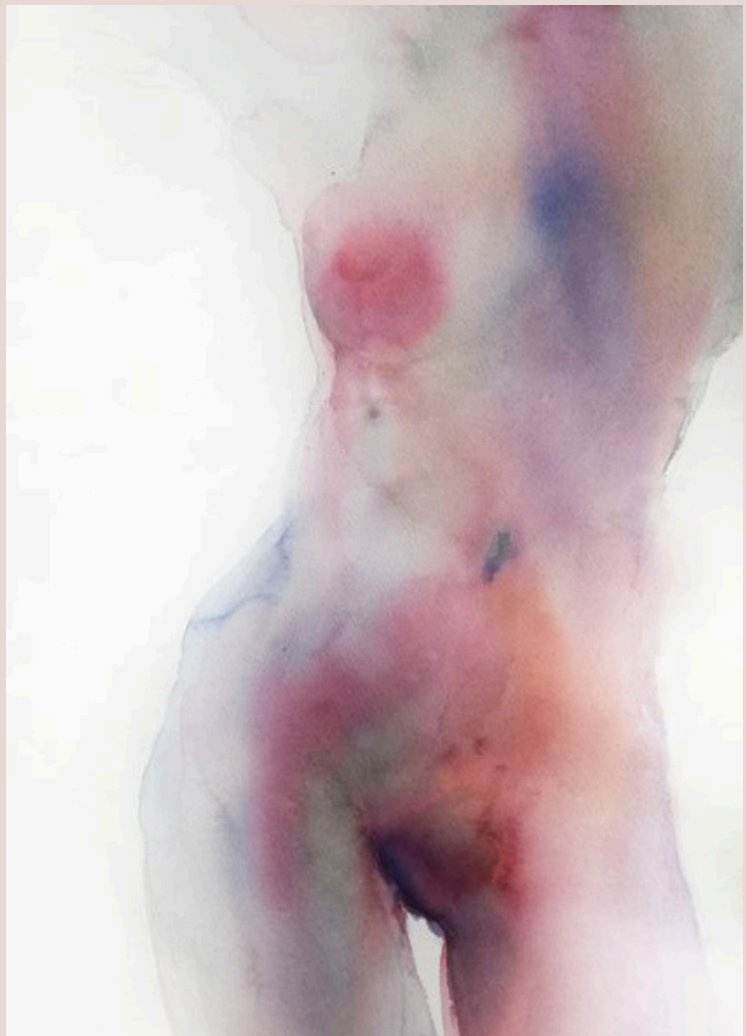
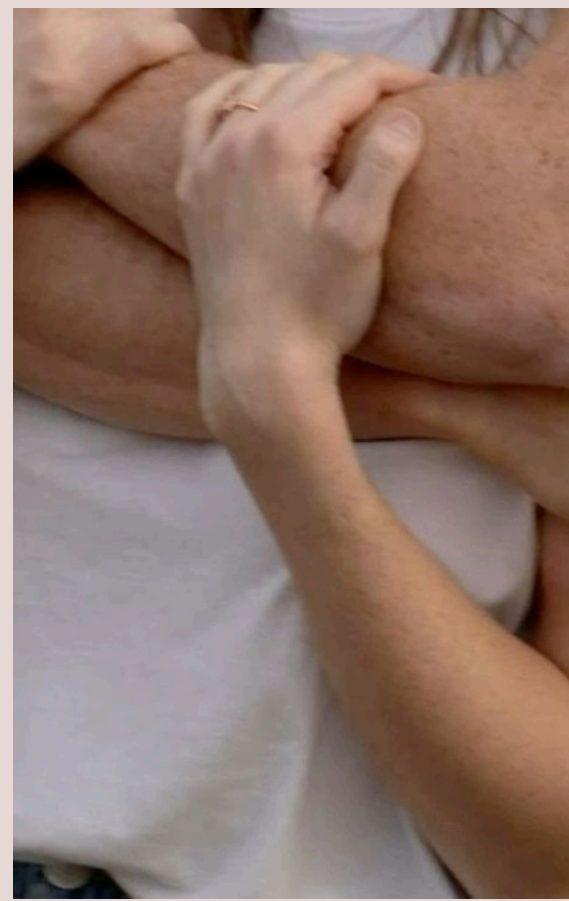
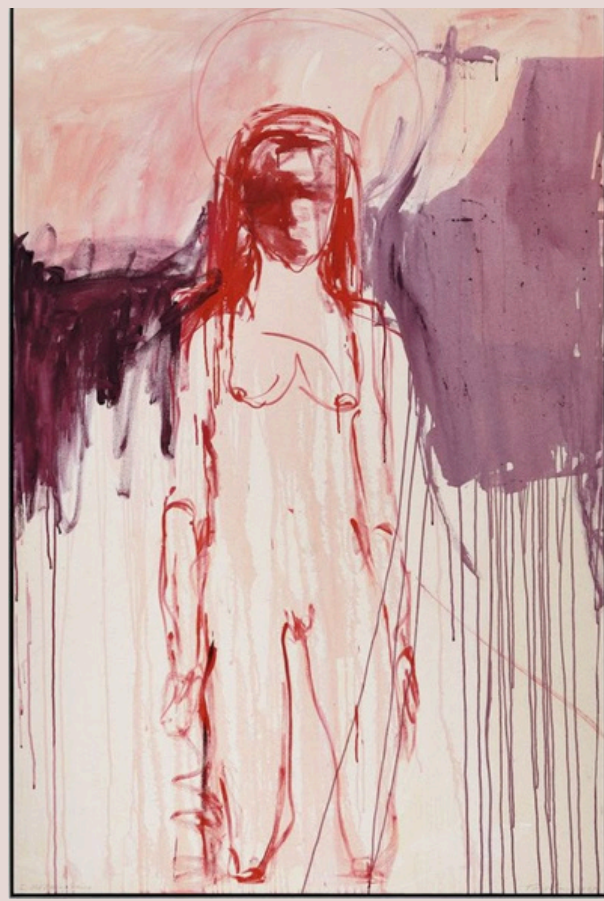
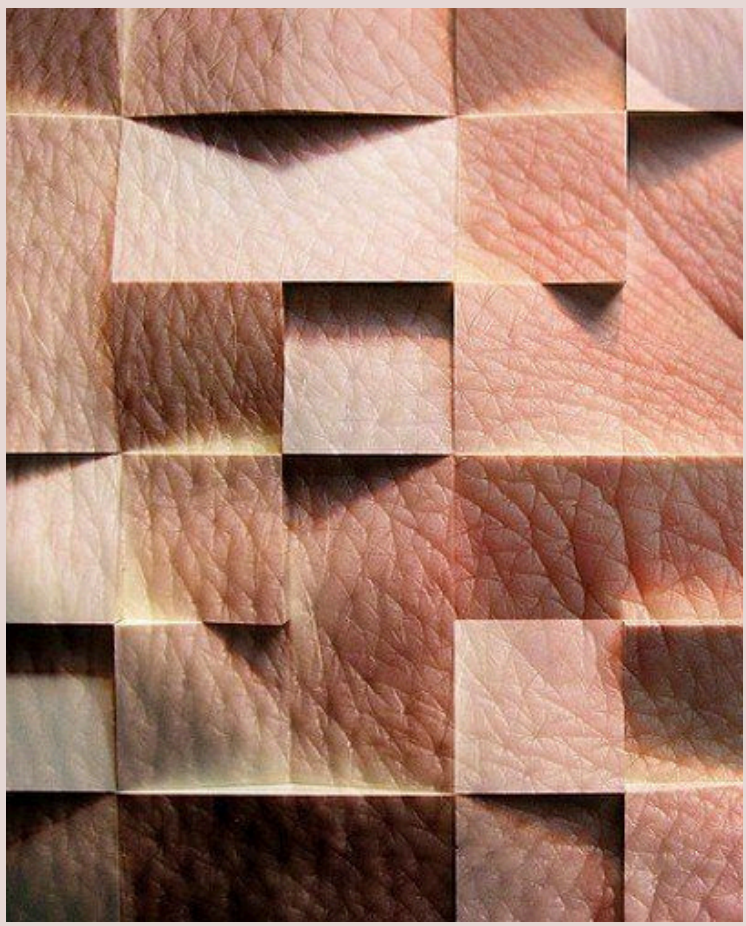


✦

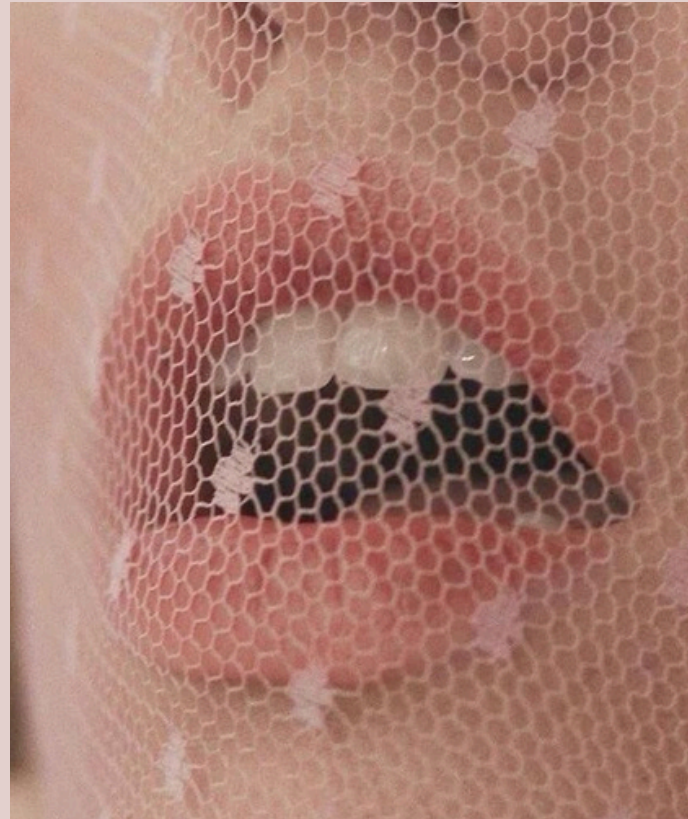
Out of Touch SS27

✦

Casey Humphrey, Ella Lupo, Ella Ostlund, &
Mirella Savee

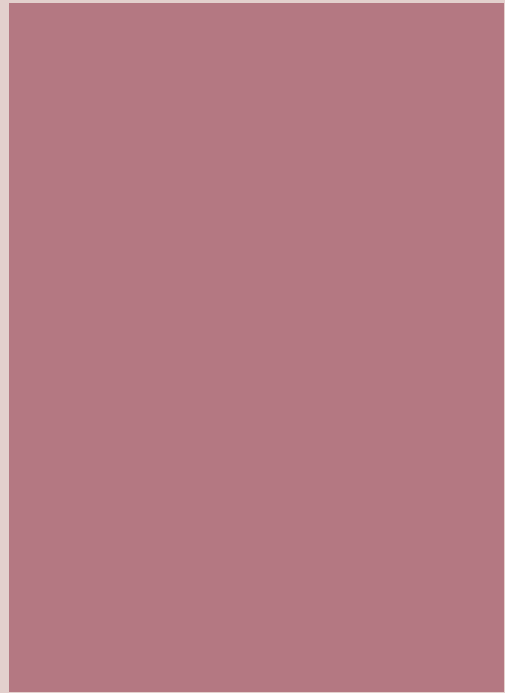


Concept.



In a world a craving physical connection, “Out of Touch” explores soft, gentle love. It embraces the delicate perfection of love that does not shout, but rather blushes, breathes, and brings a feeling butterflies. Fueling connections that thrive on the pure intensity of love alongside intimate imperfections brings a sweet strength to vulnerability. It is an ode to our most sensitive sense, the sense that remembers every passing brush, caress, and touch.

Color.



PANTONE
17-1718 TPX
Intimacy



PANTONE
19-1554 TCX
Luscious Vein



PANTONE
17-1230 TPG
Mellow Embrace



PANTONE
7443 XGC
Passionate Glance

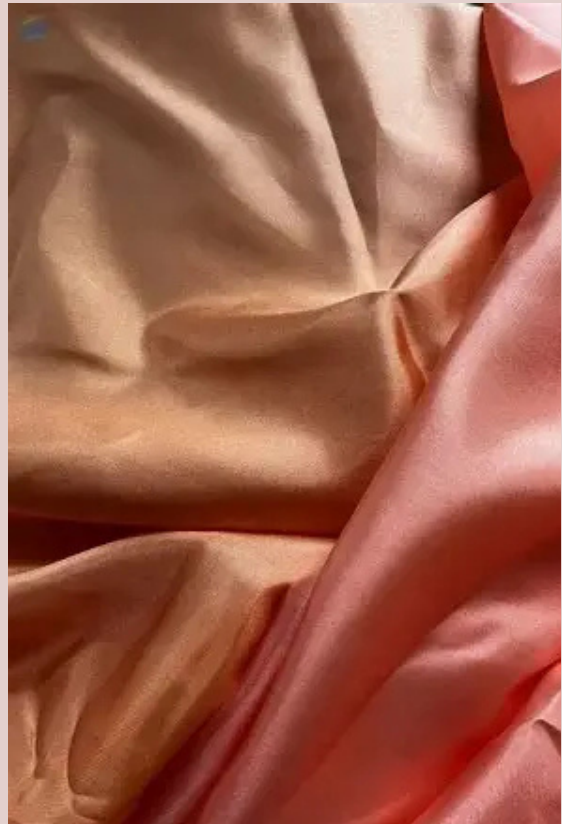
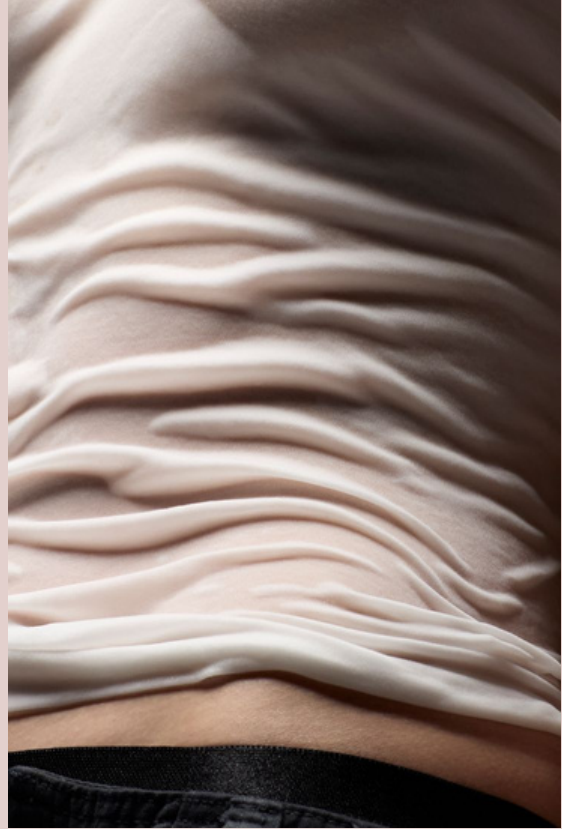


PANTONE
692 XGC
Succulent Kiss



PANTONE
11-0907 TCX
Laced Innocence

Materials.



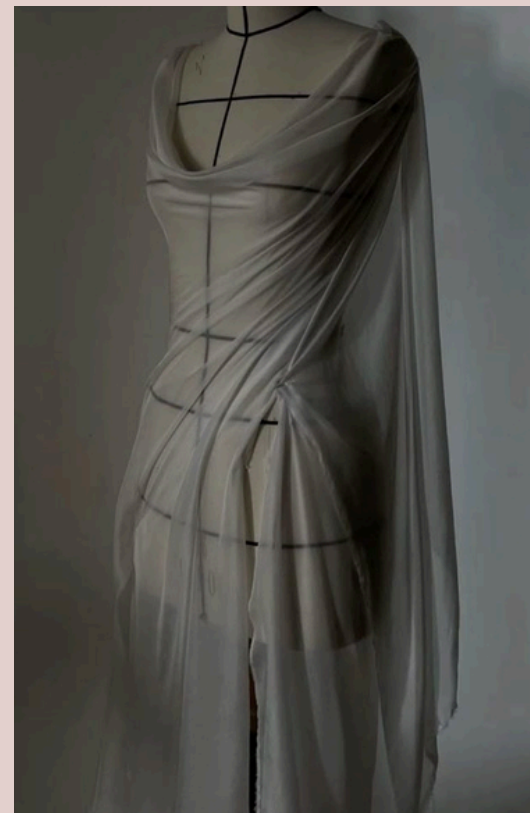
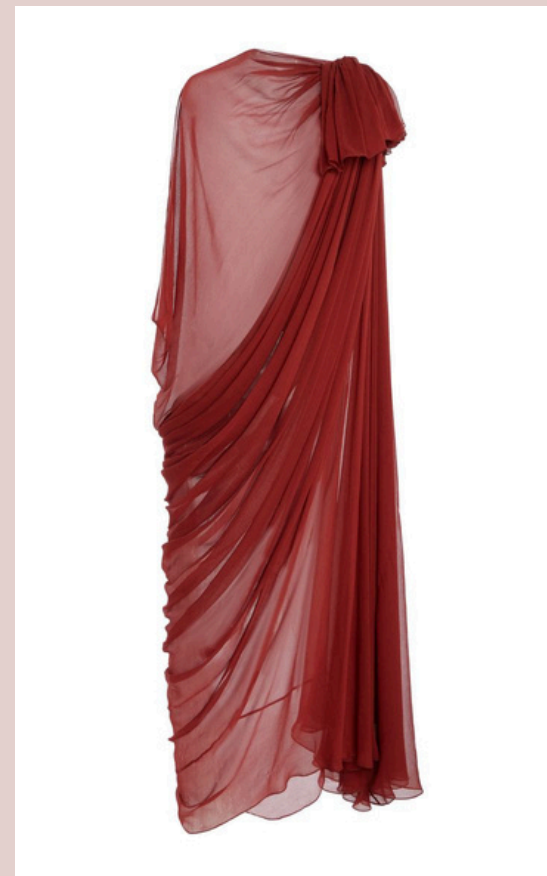
- Crochet Lace
- Tabby Silk
- Silk Tulle
- Chiffon
- Chantilly Lace

Patterns & Details.



- Ruching
- Rough Edges
- Embroidery-Vein-Like

Shapes & Structures.



- Flowy fabrics
- Defines and embraces curves
- Loosely wrapped tabby silk
- Intentional Draping

As we navigate the post-COVID world, we yearn for in-person contact. We spend so much time on our phones and the internet that our relationships have lost meaning. The pandemic shattered our traditional structures of romantic relationships. Many relationship qualities suffered from the strains of confinement and societal pressures. The lack of social stimulation, exploration, and the confines of quarantine led to clothing that was unprofessional, prioritized comfort, and that was overall not sexually appealing. Fashion designers, alongside other workers in the industry, are tirelessly working to repair this broken system. We can expect to see garments navigating the lines between vulnerability and resilience. Focusing on garments that showcase individuality, emotion, and adaptability.

Looking back to the Romantic Era, when all the art and work being created was about emotions and intense emotions. Love is not a fairy tale; it's more about nuanced and deeper connections with one another. It's no longer that traditional romance that we think of; Gen Z has gotten rid of those norms and has sought out emotional connections in other ways. Emotions are something that are not to be hidden, and the newer generations are more open to sharing them and feeling those deeper emotions.

This collection seeks to evoke the intimate sensation of touching and holding those you love. That tenderness is reflected in the use of light, sheer fabrics like tabby silk and tulle—Materials that suggest transparency and vulnerability, as if there's nothing to hide beneath the surface. This collection encourages a moment of self-reflection. The connection between mind and body is one of the deepest links between humanity and the natural world, yet over time, this connection has been gradually fading.

Foward, Stephanie. "Legacy of the Romantics." *Open Learning*,
www.open.edu/openlearn/history-the-arts/culture/literature-and-creative-
writing/literature/legacy-the-romantics#:~:text=Romanticism%20influenced%20political%20ideology%2C%20inviting,the%20group%20was%20therefore%20important. Accessed 20 July 2025.

Hayward, Jeff. "We Need a Return to Romanticism." *Medium*, Counter Arts, 16 Mar. 2025,
medium.com/counterarts/we-need-a-return-to-romanticism-1b626d9b60b3.

Luxury Fabric Stores Online. Classic Fabrics: Popular textiles of the century. Retrieved July 17, 2025.

Ross, Elizabeth M. "What Is Causing Our Epidemic of Loneliness and How Can We Fix It?" *Harvard Graduate School of Education*, www.gse.harvard.edu/ideas/usable-knowledge/24/10/what-causing-our-epidemic-loneliness-and-how-can-we-fix-it. Accessed 20 July 2025.

"Sex and Solitude: Tracey Emin's New Exhibition in Florence." *Tracey Emin: Sex and Solitude Exhibition at Palazzo Strozzi Florence 2025 - Destination Florence*,
www.destinationflorence.com/en/blog/503-sex-and-solitude-la-nuova-mostra-di-tracey-emin-a-firenze. Accessed 20 July 2025.

University of Michigan Library. Historical Costumes and Historicized Clothing. In *Divide & Clothe: Illustrating fashion in nineteenth-century Europe*. Retrieved on July 17, 2025

Wiley-Blackwell. *Overview of Romanticism of the Body*. Retrieved on July 17, 2025.

